

KING COVE, ALASKA
Instruction Sheet
2010 S-3 Supplement

REMOVE OLD PAGES

Title Page

Table of Contents

INSERT NEW PAGES

Title Page

Table of Contents

TITLE 2: ADMINISTRATION

2-5, 2-6
2-9, 2-10
2-13 through 2-18
2-21, 2-22
2-25 through 2-31

2-5, 2-6
2-9 through 2-10B
2-13 through 2-18B
2-21, 2-22
2-25 through 2-32

TITLE 5: REVENUE AND FINANCE

5-5, 5-6
5-7 through 5-10
5-20A through 5-22

5-5, 5-6
5-7 through 5-10
5-20A through 5-22

TITLE 7: PUBLIC HEALTH, PEACE AND SAFETY

7-1 through 7-4
7-15, 7-16

7-1 through 7-4
7-15, 7-16

TITLE 8: PUBLIC PROPERTY

8-5 through 8-10

8-5 through 8-10

TITLE 11: PORTS AND HARBORS

11-1, 11-2
11-9, 11-10
11-13 through 11-22

11-1, 11-2
11-9, 11-10
11-13 through 11-28

KING COVE, ALASKA: INSTRUCTION SHEET

2

REMOVE OLD PAGES

INSERT NEW PAGES

TITLE 12: UTILITIES

12-7, 12-8
12-15 through 12-18

12-7, 12-8
12-15 through 12-18

TITLE 13: PLANNING AND LAND USE REGULATIONS

13-61, 13-62
13-81 through 13-85

13-61, 13-62
13-81 through 13-86

PARALLEL REFERENCES

T-31, T-32

T-31, T-32

INDEX

I-1 through I-4
I-7 through I-10

I-1 through I-4
I-7 through I-10

KING COVE, ALASKA
Instruction Sheet
2005 S-2 Supplement

REMOVE OLD PAGES

Title Page

Table of Contents

INSERT NEW PAGES

Title Page

Table of Contents

TITLE 2: ADMINISTRATION

2-5, 2-6
2-7 through 2-14

2-5, 2-6
2-7 through 2-14

TITLE 5: REVENUE AND FINANCE

5-1, 5-2
5-5, 5-6
5-15 through 5-20
—

5-1, 5-2
5-5, 5-6
5-15 through 5-20B
5-53 through 5-62

TITLE 7: PUBLIC HEALTH, PEACE AND SAFETY

7-1 through 7-6
—

7-1 through 7-6
7-17, 7-18

TITLE 10: VEHICLES AND TRAFFIC

10-3 through 10-10

10-3 through 10-10

TITLE 11: PORTS AND HARBORS

11-3, 11-4
11-13 through 11-22

11-3, 11-4
11-13 through 11-22

TITLE 12: UTILITIES

12-17

12-17, 12-18

TITLE 13: PLANNING AND LAND USE REGULATIONS

13-57 through 13-60

13-57 through 13-60

REMOVE OLD PAGES

INSERT NEW PAGES

ORDINANCE IDENTIFICATION AND DISPOSITION TABLE

T-27, T-28

T-27 through T-32

INDEX

I-3, I-4

I-7 through I-10

I-13, I-14

I-17 through I-20

I-3, I-4

I-7 through I-10

I-13, I-14

I-17 through I-20

KING COVE, ALASKA
Instruction Sheet
2001 S-1 Supplement

REMOVE OLD PAGES

Title Page

Table of Contents

INSERT NEW PAGES

Title Page

Table of Contents

TITLE 1: GENERAL PROVISIONS

1-7

1-7, 1-8

TITLE 2: ADMINISTRATION

2-1 through 2-6
2-17, 2-18
2-23, 2-24

2-1 through 2-6B
2-17, 2-18
2-23, 2-24

TITLE 5: REVENUE AND FINANCE

5-1, 5-2
5-5, 5-6
5-15 through 5-24
5-27, 5-28

5-1, 5-2
5-5 through 5-6B
5-15 through 5-24
5-27, 5-28

TITLE 7: PUBLIC HEALTH, PEACE AND SAFETY

7-1 through 7-6
7-9, 7-10

7-1 through 7-6
7-9, 7-10

TITLE 8: PUBLIC PROPERTY

8-1, 8-2
8-11

8-1, 8-2
8-11, 8-12

TITLE 11: PORTS AND HARBORS

11-9, 11-10
11-15, 11-16

11-9, 11-10
11-15, 11-16

TITLE 12: UTILITIES

12-7 through 12-10

12-7 through 12-10

KING COVE, ALASKA: INSTRUCTION SHEET

REMOVE OLD PAGES

INSERT NEW PAGES

TITLE 13: PLANNING AND LAND USE REGULATIONS

13-57 through 13-62

13-57 through 13-62

ORDINANCE IDENTIFICATION AND DISPOSITION TABLE

T-27

T-27, T-28

INDEX

I-1 through I-4
I-13, I-14

I-1 through I-4
I-13, I-14

**SUPPLEMENT INSERTION GUIDE NO. 98-1
CITY OF KING COVE, ALASKA, MUNICIPAL CODE**

**February 1998
(Covering Ordinance through 98-02)**

This supplement consists of reprinted pages replacing existing pages in the King Cove Code of Ordinances. Remove pages listed in the column headed "Remove Pages" and in their places insert the pages listed in the column headed "Insert Pages". This Guide should be inserted in the front or back of the Code and retained as a permanent record of pages supplemented.

Remove Pages

Insert Pages

TABLE OF CONTENTS

Remove TOC

Insert TOC

TEXT

2-7 -- 2-10	5-1 -- 5-2
2-29	2-29 -- 2-31
7-3 -- 7-4	7-3 -- 7-4
10-1 -- 10-2	10-1 -- 10-2
10-5 -- 10-7	10-5 -- 10-10
12-15 -- 12-17	12-15 -- 12-17

TABLES

T-25 -- T-26	T-25 -- T-27
------------------------	--------------

INDEX

I-1 -- I-2	I-1 -- I-2
I-7 -- I-19	I-7 -- I-20

**SUPPLEMENT INSERTION GUIDE NO. 97-1
CITY OF KING COVE, ALASKA, MUNICIPAL CODE**

**February 1997
(Covering Ordinances 96-04 through 97-02)**

This supplement consists of reprinted pages replacing existing pages in the King Cove Code of Ordinances. Remove pages listed in the column headed "Remove Pages" and in their places insert the pages listed in the column headed "Insert Pages". This Guide should be inserted in the front or back of the Code and retained as a permanent record of pages supplemented.

Remove Pages

Insert Pages

TABLE OF CONTENTS

TEXT

2-15 -- 2-18	2-15 -- 2-18
2-23 -- 2-26	2-23 -- 2-26
5-5 -- 5-8	5-5 -- 5-8
8-5 -- 8-6	8-5 -- 8-6
11-13 -- 11-20	11-13 -- 11-20

TABLES

T-25	T-25 -- T-26
----------------	--------------

INDEX

I-13 -- I-14	I-13 -- I-14
------------------------	--------------

**SUPPLEMENT INSERTION GUIDE NO. 96-1
CITY OF KING COVE, ALASKA, MUNICIPAL CODE**

**February 1996
(Covering Ordinance 95-17)**

This supplement consists of reprinted pages replacing existing pages in the King Cove Code of Ordinances. Remove pages listed in the column headed "Remove Pages" and in their places insert the pages listed in the column headed "Insert Pages". This Guide should be inserted in the front or back of the Code and retained as a permanent record of pages supplemented.

Remove Pages

Insert Pages

TABLE OF CONTENTS

TEXT

11-9 -- 11-10	11-9 -- 11-10
11-13 -- 11-16	11-13 -- 11-16

TABLES

INDEX

**SUPPLEMENT INSERTION GUIDE NO. 96-1
CITY OF KING COVE, ALASKA, MUNICIPAL CODE**

**February 1996
(Covering Ordinances 95-05 -- 96-04)**

This supplement consists of reprinted pages replacing existing pages in the King Cove Code of Ordinances. Remove pages listed in the column headed "Remove Pages" and in their places insert the pages listed in the column headed "Insert Pages". This Guide should be inserted in the front or back of the Code and retained as a permanent record of pages supplemented.

Remove Pages

Insert Pages

TABLE OF CONTENTS

one page

TEXT

2-3 -- 2-18	2-3 -- 2-18
2-23 -- 2-26	2-23 -- 2-26
5-3 -- 5-4	5-3 -- 5-4
7-1 -- 7-2	7-1 -- 7-2
7-5 -- 7-6	7-5 -- 7-6
	7-11 -- 7-16
10-5 -- 10-6	10-5 -- 10-6
11-9 -- 11-10	11-9 -- 11-10
11-13 -- 11-18	11-13 -- 11-18
12-5 -- 12-10	12-5 -- 12-10
12-15 -- 12-17	12-15 -- 12-17

TABLES

T-23 -- T-24	T-23 -- T-25
------------------------	--------------

INDEX

I-1 -- I-18	I-1 -- I-18
-----------------------	-------------

**SUPPLEMENT INSERTION GUIDE NO. 95-1
CITY OF KING COVE, ALASKA, MUNICIPAL CODE**

**February 1995
(Covering Ordinances 94-3 - 95-4)**

This supplement consists of reprinted pages replacing existing pages in the King Cove Municipal Code. Remove pages listed in the column headed "Remove Pages" and in their places insert the pages listed in the column headed "Insert Pages". This Guide should be inserted in the front of the Code and retained as a permanent record of pages supplemented.

Remove Pages

Insert Pages

TABLE OF CONTENTS

one page

TEXT

11-1 -- 11-2	11-1 -- 11-2
11-19	11-19 -- 11-21
12-9 -- 12-10	12-9 -- 12-10

TABLES

T-23 -- T-24	T-23 -- T-24
------------------------	--------------

INDEX

I-11 -- I-18	I-11 -- I-18
------------------------	--------------

SUPPLEMENT INSERTION GUIDE NO. 94-1
CITY OF KING COVE, ALASKA, MUNICIPAL CODE

May 1994
(Covering Ordinances 93-6 - 94-5)

This supplement consists of reprinted pages replacing existing pages in the King Cove Municipal Code. Remove pages listed in the column headed "Remove Pages" and in their places insert the pages listed in the column headed "Insert Pages". This Guide should be inserted in the front of the Code and retained as a permanent record of pages supplemented.

Remove Pages

Insert Pages

TABLE OF CONTENTS

one page

TEXT

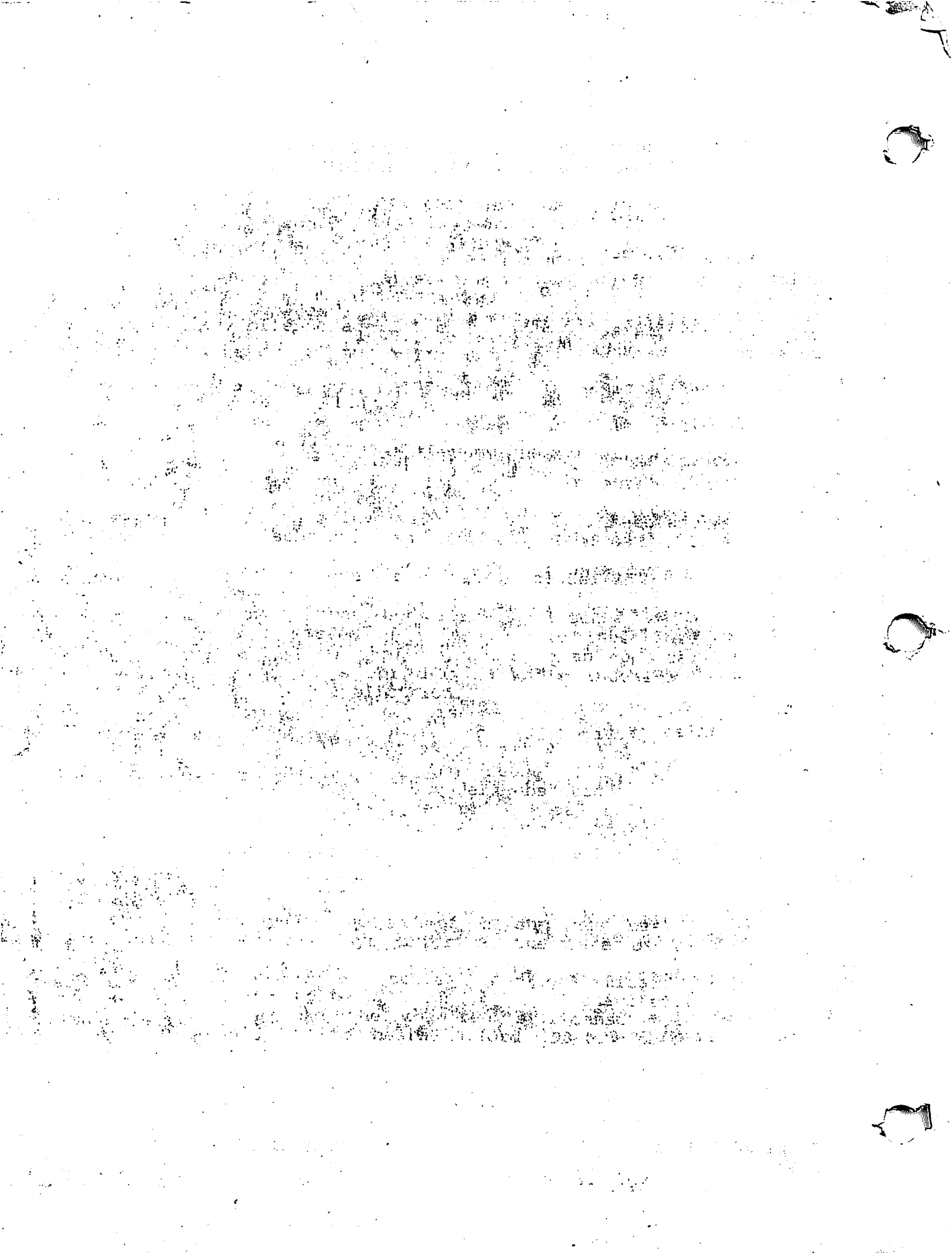
5-1 -- 5-36	5-1 -- 5-40
7-5 -- 7-6	7-5 -- 7-6
8-3 -- 8-4	8-3 -- 8-4
10-1 -- 10-2	10-1 -- 10-2
11-9 -- 11-19	11-9 -- 11-19

TABLES

T-23	T-23 -- T-24
----------------	--------------

INDEX

I-5 -- I-6	I-5 -- I-6
----------------------	------------



**SUPPLEMENT INSERTION GUIDE NO. 93-1
CITY OF KING COVE, ALASKA, MUNICIPAL CODE**

**February 1993
(Covering Ordinances 92-4 - 93-5)**

This supplement consists of reprinted pages replacing existing pages in the King Cove Municipal Code. Remove pages listed in the column headed "Remove Pages" and in their places insert the pages listed in the column headed "Insert Pages". This Guide should be inserted in the front of the Code and retained as a permanent record of pages supplemented.

Remove Pages

Insert Pages

TABLE OF CONTENTS

one page

TEXT

3-1 -- 3-18	3-1
5-1 -- 5-2	5-1 -- 5-2
7-3 -- 7-9	7-3 -- 7-10
8-7 -- 8-10	8-7 -- 8-10
10-1 -- 10-2	10-1 -- 10-2
11-13 -- 11-19	11-13 -- 11-19
12-7 -- 12-10	12-7 -- 12-10
12-15 -- 12-16	12-15 -- 12-16
13-57 -- 13-60	13-57 -- 13-60

TABLES

T-21 -- T-22	T-21 -- T-23
------------------------	--------------

INDEX

I-1 -- I-6	I-1 -- I-6
I-9 -- I-19	I-9 -- I-18

**SUPPLEMENT INSERTION GUIDE NO. 92-1
CITY OF KING COVE, ALASKA, MUNICIPAL CODE**

**February 1992
(Covering Ordinances 91-1 - 92-01)**

This supplement consists of reprinted pages replacing existing pages in the King Cove Municipal Code. Remove pages listed in the column headed "**Remove Pages**" and in their places insert the pages listed in the column headed "**Insert Pages**". This Guide should be inserted in the front of the Code and retained as a permanent record of pages supplemented.

Remove Pages

Insert Pages

TITLE PAGE

one page

TEXT

5-3 -- 5-8	5-3 -- 5-8
10-3 -- 10-4	10-3 -- 10-4
11-3 -- 11-4	11-3 -- 11-4
11-7 -- 11-18	11-7 -- 11-19

TABLES

T-21	T-21 -- T-22
----------------	--------------

INDEX

I-13 -- I-18	I-13 -- I-14
------------------------	--------------